

THE COLLABORATION YARD

Connecting society back into the workplace

BY NINA WERYK

The Issue

- This project will address the need to tackle the rise in social isolation for home workers which has increased since the global pandemic resulting in lower productivity and a loss of connections for people working from home causing people to feel more disconnected than ever before.
- From research it appears residents from Edinburgh in particular the North West where built up areas suffer from complete or almost complete lack of contact with services or society have increased feelings of social isolation more so since going into the office has been cut out of the equation
- It is vital we can do all we can to get this under control by helping and encouraging workers to return to the workplace and integrate back into society.



The Brief

Adapt and re-design an existing office premises situated at 17-21 Silvermills, Edinburgh New Town between Stockbridge and Canonmills to accommodate homeworkers of all age groups and backgrounds from a variety of employees to come together and encourage them to reconnect with society and work in an innovative space which will focus on the three main key areas, Productivity, Collaboration and Restoration which will have a focus on biophilic influence throughout the design. The building is situated in the grounds of a former tram yard and I am also looking to bring the inspiration of this into the design.



The End User

- Homeworkers suffering from loneliness/feeling socially isolated
- Gender - All Genders including LGBTQ + Community
- Disability inclusive
- Location - Edinburgh and surrounding areas (30 min radius)
- All ages/all backgrounds and inclusive to students

Concept

The concept is both inspired by and one that inspires the need for a more innovative nurturing, sustainable working environment which will help to counteract the users feeling of social isolation. The concept will focus on these key aspect

- Biophilic design,
- Inclusivity
- Productivity
- Collaboration
- Restoration areas which are key to enhancing wellbeing



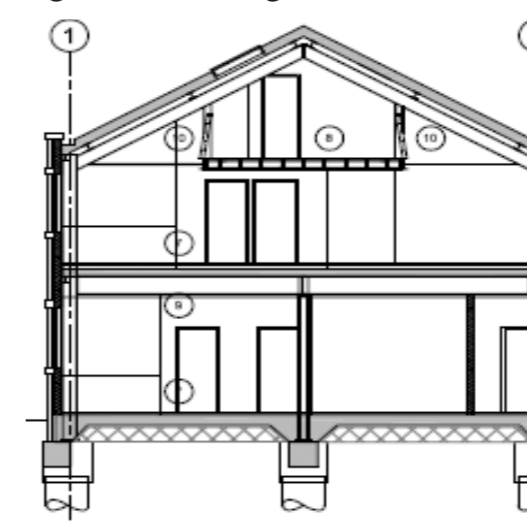
Site Analysis



Site location



Image of existing site



Section



Elevation

The site was chosen due to its central location in the New Town area of Edinburgh set between Stockbridge and Canonmills with transport links which provide good accessibility and easy access to commuters from the North West and surrounding nearby area and just a short walk to the Waverley train station. The site also offers a courtyard car parking area and easy access when commuting by car. It is perfectly located and serviced by many local amenities from bars, restaurants, gyms and cafes which will help connect the homeworkers back into society.

Design development of planter/seating area feature

