



Final Major Project
BA (Hons) Interior Design
Heriot-Watt University

NOURISH GLASGOW



Community Hub
'Supporting the people
of Glasgow'

NOURISH GLASGOW:

Aimed to empower, excite and ultimately give light to those who may be struggling with the ongoing cost of living crisis.

Located in The Burrell Collection, Glasgow, Nourish Glasgow is inspired by nature and provides a bright, therapeutic space to break the stigma of receiving help for those in need. By creating a space that provides a safe, welcoming environment for people struggling with the cost of living, this design provides a warm, social, and educational facility with access to free nutritional food.

I aim to create a different experience from the standard facilities, so people feel more confident coming forward to access the resources offered and by doing so removing the stigma behind seeking help.

THE ISSUE:

There are a range of current factors that have caused the cost-of-living to increase so rapidly:

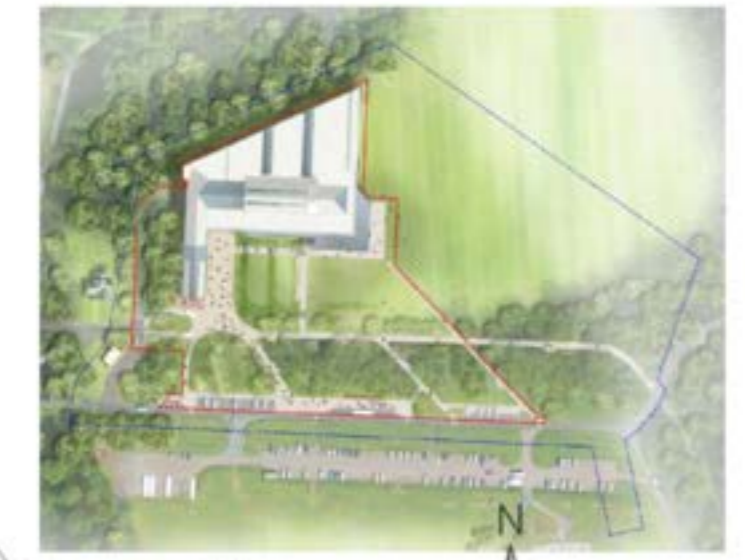
- Coronavirus pandemic
- War between Ukraine & Russia
- Inflation

As a consequence, many low to middle income groups who have not required financial assistance before, are now experiencing hardship.

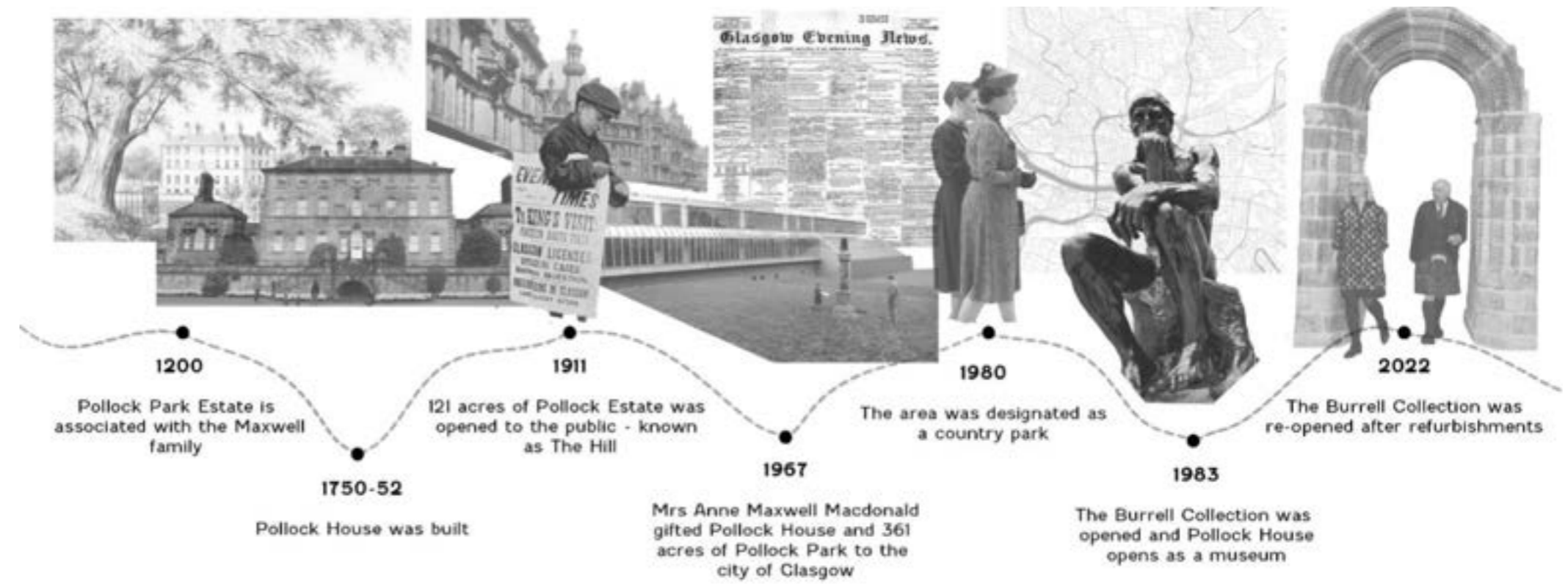
The stigma associated with seeking help, including accessing food banks, is a barrier for many who fall into this new group.

THE DRIVE:

The big drive of this project is to reduce the stigma behind accessing help due to the cost-of-living crisis. If each city had a community hub available for people to access help, the stigma would reduce because it would be a well-known facility that lots of people use.



- MT7 runs next to Pollock Park (parking on site of The Burrell Collection)
- Number 3 bus service is the most direct route (taking 18 minutes from the city centre)
- Ideal for pedestrians because of the restriction of car movement throughout the park giving pedestrians and cyclists right of way
- The Glasgow/Vivine railway cuts across the east section of the park (accessible by the Kilmahew, Pollockharrow West and Shawlands train stations which are all a few minutes walk away)



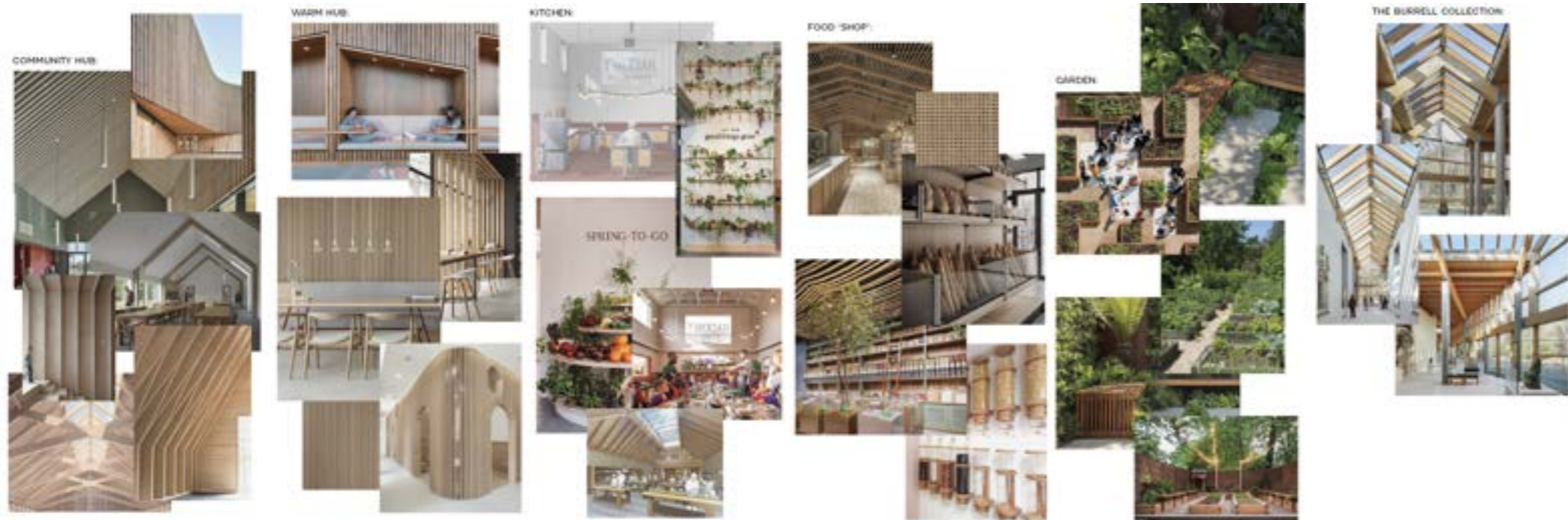
ADAPTABILITY:

A key aim for Nourish Glasgow was to make it adaptable. Glasgow is not the only city in the UK being affected by the cost-of-living crisis. My idea was to create a community hub that could be adapted for any city. For example, Nourish Edinburgh or Nourish Aberdeen. The community hub can be sited in any city that has the available facilities to host it.

THE BURRELL COLLECTION:

I chose to locate my space within The Burrell Collection in Glasgow. The Burrell Collection is situated in Pollock Park, surrounded by lots of natural outdoor space.

The history behind The Burrell Collection inspired me to choose this as a location for my space. Sir William Burrell originally donated his collection of art to the people of Glasgow because he felt that everyone should experience the collections that only people with lots of wealth could afford at the time. I thought this connection was very fitting since my aim was to create Nourish Glasgow for people at a time of need.



LAYOUT:

The space was split into five sections, the entrance, warm hub, food shop, learning space/kitchen and garden.

The food hub will be the largest section, although it mainly consists of seating. Whereas the other sections take up less room, but will have more complex layouts.

CONCEPT:

My initial concept for Nourish Glasgow was to create a space that connects with nature. Nature has many therapeutic benefits such as reducing stress and my aim was to maximise these benefits for those at a time of crisis.

Inspired by the current building, I wanted to use sustainable materials to create a fresh concept while still complimenting the original space.

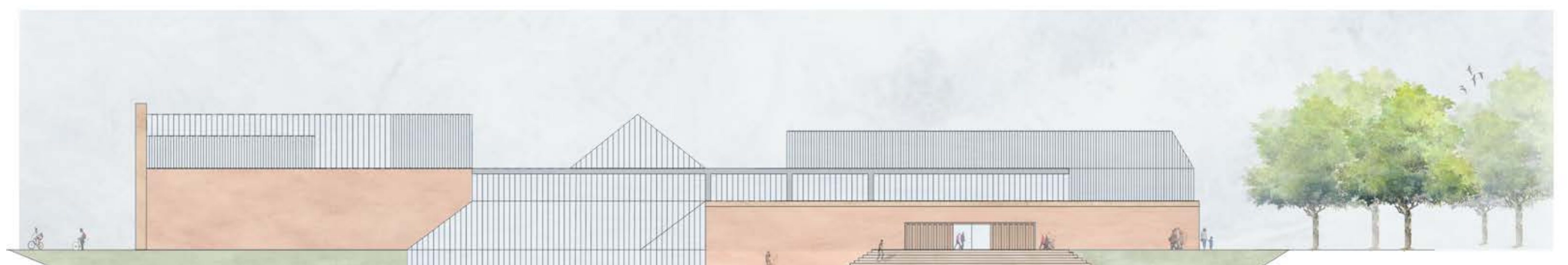
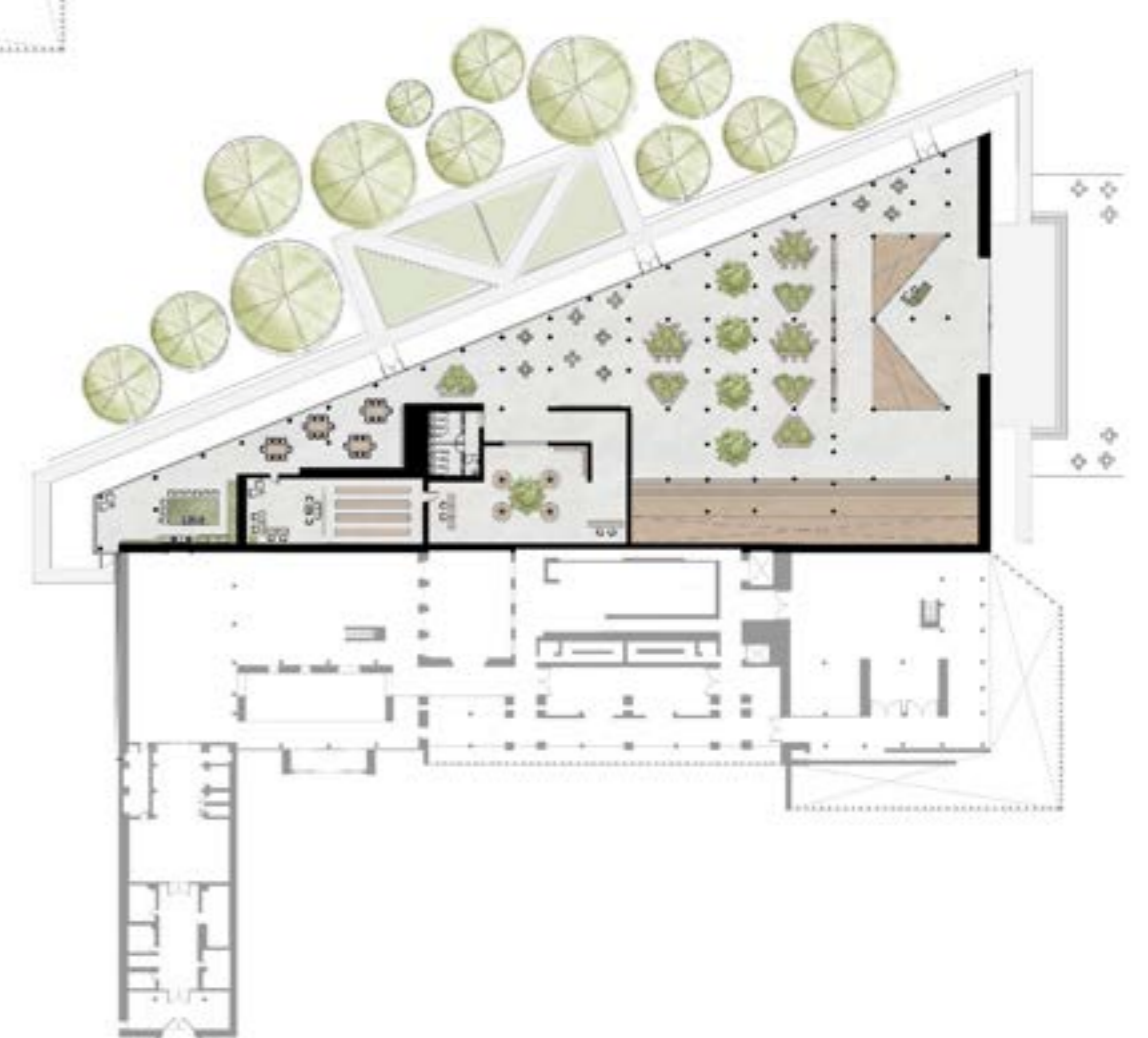
By repurposing this space for the citizens of Glasgow this will not only meet current societal needs, but compliment the mission of The Burrell Collection.



MATERIALS:

All new materials used within the space are in keeping with the original Burrell Collection.

- Wood
- Stone
- Stainless steel



NOURISH GLASGOW:

The intention of this space was to keep the original structure, making minimal changes to the overall building. Instead, adding new features to make the function of the space more suitable for its new purpose.

The main features in the original space were the oak wooden beams and the concrete pillars. Both of these features were structural elements of the building, so creating a design that complimented these features instead of hiding them was important.

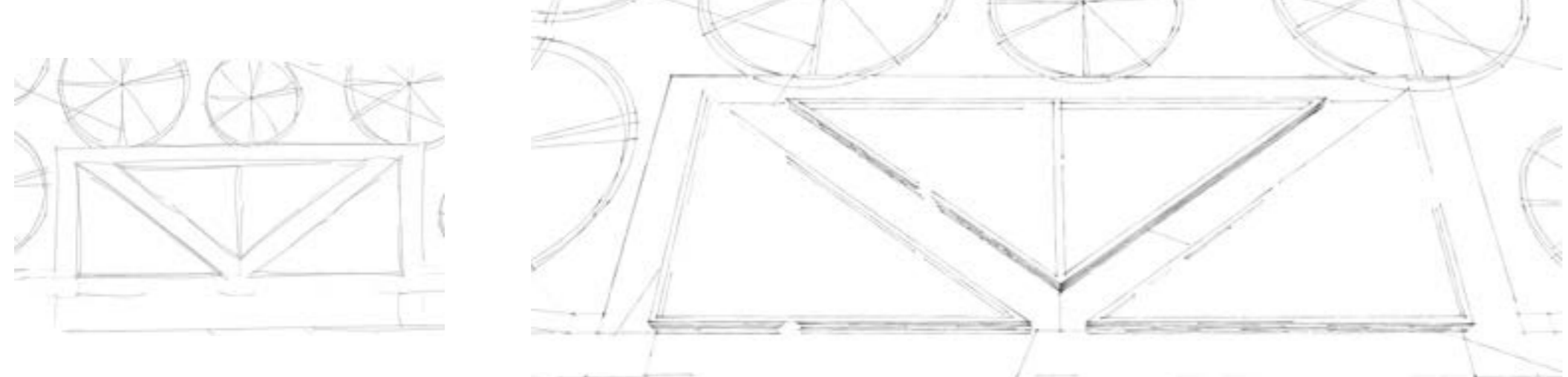


GARDEN:

The original floor to ceiling windows showcase the garden area on the north-side of the building with a path that leads directly from Nourish Glasgow to The Burrell Collection.

The garden design specifically compliments the Nourish Glasgow ethos by featuring raised beds for growing organic produce to use in the kitchen/learning space.

Designed to be inclusive for all ages and abilities, the garden is spacious to enable free movement of wheelchairs and prams.



SEATING STRUCTURE 1:

This seating structure is located in the warm hub, but also acts as a partition for the reception area. This gives more privacy to people using any of the facilities while also letting lots of light into the space.



KITCHEN/LEARNING SPACE:

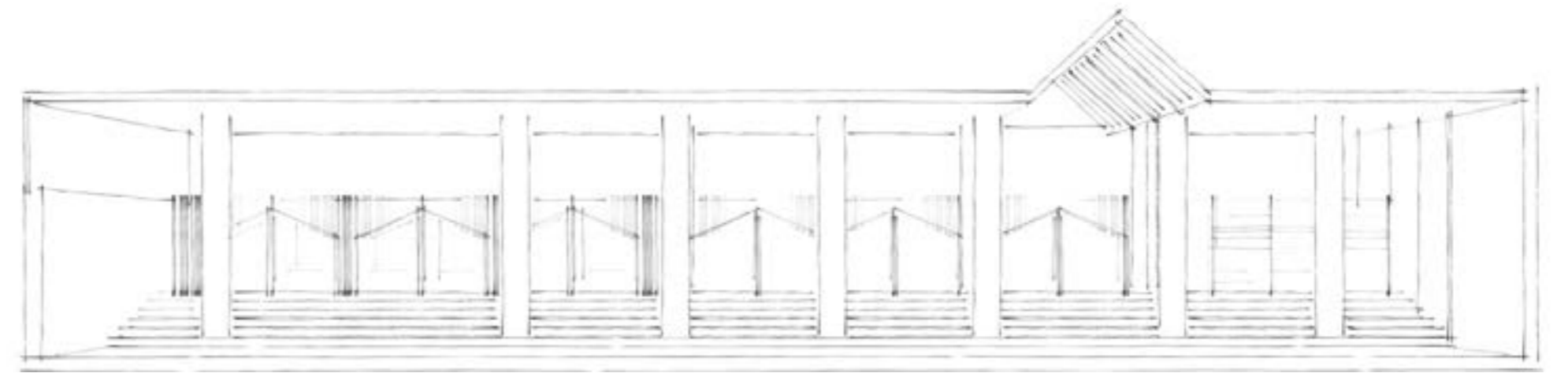
The open plan kitchen aims to be an inclusive space. Visible from other areas of the Nourish Glasgow, it encourages participation from people passing by. Connected is the learning space, suitable for groups of people wanting to learn about the impact of food waste, how to make the most of fresh produce and general tips on cooking and saving money.



SEATING STRUCTURE 2:

This is the largest structure within the space with a mix of group and individual recessed seating. The raised platform maximises the panoramic view over the warm hub through to the garden.

The aim of this structure was to provide more private enclosed spaces to contrast with the open plan areas.



SEATING STRUCTURE 3:

These triangular seating structures help to break up the warm hub in a practical way. They are positioned throughout the space to create a variety of seating areas incorporating planting to bring nature into the space.

